

LAWRENCE BUSINESS MAGAZINE

2023 Q3



SKILLED TRADES
& APPLIED TECHNOLOGY



MIDCO
BUSINESS®

Our business solutions don't stop.

Small and local. Big and global. Whatever the size and scope of your business, Midco® provides the services and support to keep your goals on track and you in control.

Midco.com/Business

Internet. Phone. TV.

Business Banking

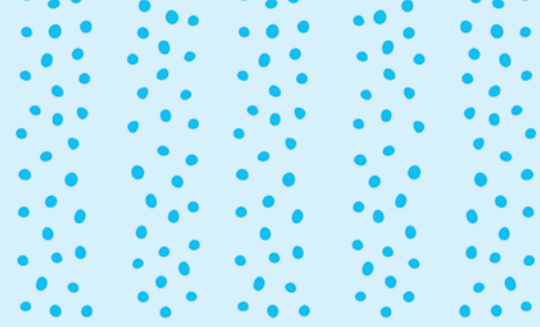
TODAY is for listening before lending.

Today is for *really* getting to know your business — your goals, pressures, and “what ifs” that need answers. By understanding your business, we can provide nuanced guidance when it comes to lending, treasury management, retirement plan services, and more. Providing value beyond the expected is part of our tradition, and we're ready to serve you today. intrustbank.com



 **INTRUST**
Bank®

Tradition for TODAY.



Our commitment.

We remain committed to helping small businesses offer trusted health insurance plans for employees.

Talk to our expert sales consultants
866-403-1514



Cole Huerter



Danielle Truhe



Get a free, quick quote bcbsks.com/smallbiz



An independent licensee of the Blue Cross Blue Shield Association

LBM 0723

LAWRENCE & DOUGLAS COUNTY BUSINESS MAGAZINE 2023 Q3

LETTER FROM THE PUBLISHERS

Skilled trades and the training required to excel in them are vital to our thriving community. This wide range of professions includes plumbers, electricians, carpenters, welders, HVAC, robotics, commercial drivers, and mechanics, to name a few. Luckily, we have many of these businesses in Lawrence and the capacity to train for these careers. The significance of these professions goes beyond economic contributions, as they play a fundamental role in shaping the fabric of our local community. Unfortunately, we cannot cover all of the businesses here in Douglas County, but we try to give you an overview of these professions and a little insight into the careers.

Skilled trades offer an alternative educational pathway for community members who may not want to pursue traditional two and four-year college degrees or are looking for a second career. Vocational and technical training programs provide accessible avenues for personal and professional development. When residents are trained and employed in these jobs, it bolsters our local economy. These skilled tradespeople are responsible for building and maintaining critical infrastructure – including our city streets and county roads, bridges, water utilities, constructing homes, schools, healthcare facilities, and local businesses.

Lawrence's Peaslee Tech offers technical training for skilled trades, as well as mentorship and apprenticeship opportunities. The passing down of knowledge and skills from experienced professionals to newcomers is a valuable aspect of community-building. It ensures that expertise is preserved and that younger generations have access to essential skills.

Another key role the skilled trades play is in promoting sustainable practices within Lawrence and the greater community. Electricians install energy-efficient lighting, plumbers implement water-saving technologies, and HVAC technicians optimize heating and cooling systems for energy conservation, reducing resource consumption, which benefits the environment.

Skilled tradespeople are essential for quick and effective responses during emergencies, such as natural disasters or power outages. Electricians, for example, help restore power, while carpenters and construction workers assist in rebuilding damaged structures. Good training in these professions helps ensure that Lawrence stays resilient and better equipped to handle unforeseen challenges.

As you read through this issue, please remember that all our advertisers have a stake in the local economy; we ask you to first consider them before looking to source your needs outside of the community. Try and shop locally as much as possible and avoid the urge to order online. If you find something online – see if one of our local businesses has it. We know they would appreciate the business - our local businesses are at the center of our community.

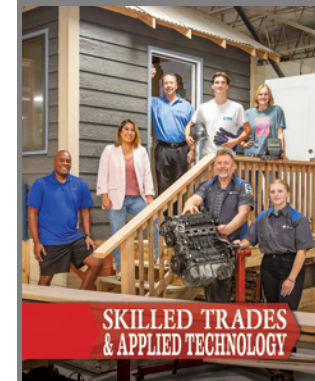
When we Shop Local - Shop Baldwin, Eudora, Lecompton, and Lawrence (and use Local Services) -we are supporting those businesses, giving back to our community, and building a future together.

Sincerely,

Ann Frame Hertzog
Editor-in-Chief/Publisher

Steven Hertzog
Chief Photographer/Publisher

www.LawrenceBusinessMagazine.com



ON THE COVER - PEASLEE

REPRESENTATIVES

(clockwise from left):

Nick Marshall - Math Instructor, Adult Education Program (GED);

Brittany Hall - Board Member;

Dr. Kevin Kelley - CEO;

Stephen Huffman - Welding Student;

Lina Matthews - Welding Student;

Isabella Armstrong - Automotive Technology Student;

Kevin Bailey - Automotive Technology Instructor.

Photo by Steven Hertzog

Publisher:
Lawrence Business Magazine, LLC

Ann Frame Hertzog
& Steven Hertzog

Editor-in-Chief:
Ann Frame Hertzog

Chief
Photographer:
Steven Hertzog

Featured Writers:
Bob Luder

Patricia A.
Michaelis, Ph.D.

Emily Mulligan

Nick Spacek

Tara Trenary

Darin M. White

Copy Editor:

Tara Trenary

Contributing

Writers:

Kade Han

Julie DeYoung

Contributing

Photographers:

Thad Powell, McElroy's Inc

INQUIRIES & ADVERTISING
INFORMATION CONTACT:

info@LawrenceBusinessMagazine.com

LawrenceBusinessMagazine.com

Lawrence Business Magazine, LLC

3514 Clinton Parkway, Suite A-113

Lawrence, KS 66047

© 2023 Lawrence Business Magazine, LLC

Lawrence Business Magazine, is published quarterly by Lawrence Business Magazine, LLC and is distributed by direct mail to businesses in the Lawrence & Douglas County Community. It is also distributed at key retail locations throughout the area and mailed to individual subscribers. All rights reserved. No part of this publication can be reprinted or reproduced without the publisher's permission. Lawrence Business Magazine, LLC assumes no responsibility for unsolicited materials. Statements and opinions printed in the Lawrence Business Magazine are the those of the author or advertiser and are not necessarily the opinion of Lawrence Business Magazine.



Something special starts here.

At LMH Health, our purpose is to be a partner for lifelong health. To fulfill that purpose, we're committed to making everyone's health our priority. That's broader than the conventional approach to most hospitals and healthcare. It's about keeping people healthy, which is a much bigger commitment than treating you only when you're sick. It means increasing opportunities for everyone to live the healthiest life possible.

Choose your partner for lifelong health at lmh.org/partner.



A partner for lifelong health