

LAWRENCE

# BUSINESS

MAGAZINE

2023 Q1

NO PLACE LIKE  
Lawrence, KS



LOCAL MEDIA  
& MARKETING





**The Trust Company of Kansas is proud to announce:  
Christopher M. English, C.T.F.A. – Chairman & Chief Executive Officer**

In addition to his role as Chief Executive Officer, Chris has taken on the role of Chairman of the Board at The Trust Company of Kansas. Since assuming a leadership role in November 2020, he has led TCK in successfully managing over \$1 billion in assets under management.



**Teresa Akers – Vice President & Trust Officer**

Teresa has been promoted to Vice President & Trust Officer. She will be responsible for the administration of a variety of account relationships – agencies, guardianships, revocable and irrevocable trusts, individual retirement accounts, and other types of fiduciary accounts in our Lawrence market. In this role, she will continue to work closely with Chief Executive Officer, Christopher English



**Jennifer Moore – Vice President & Trust Officer**

Jennifer has been promoted to Vice President & Trust Officer. She will be responsible for the administration of a variety of account relationships – agencies, guardianships, revocable and irrevocable trusts, individual retirement accounts, and other types of fiduciary accounts in our Lawrence market. In this role, she will continue to work closely with Senior Vice President & Trust Officer, Daniel Brogren.



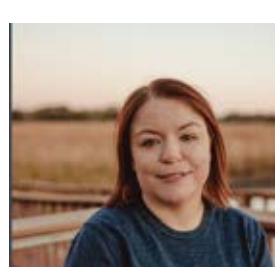
**Lee Anne Thompson – Vice President & Employee Benefit Officer**

Lee Anne Thompson has been promoted to Vice President & Employee Benefit Officer. She assists TCK’s Administrators with the technical and administrative functions regarding ERISA plan administration for 401(k), Profit Sharing and Defined Contribution Defined Benefit Plans, and SIMPLE IRA Plans. Lee Anne’s knowledge and expertise allows her to best design effective retirement planning strategies on behalf of our clients.



**Chris Davis – Vice President & Trust Officer**

Chris joined The Trust Company of Kansas as Vice President & Trust Officer in December 2021. He will focus on business development and new growth opportunities in our Lawrence market.



**Mindy Mesler – Trust Administrator**

Mindy joined The Trust Company of Kansas in January 2022 after a successful career as an administrative assistant in the field of education. With her excellent organizational and interpersonal skills, Mindy will assist Chris English, Teresa Akers, and Jennifer Moore with the administration of their books of trust business and business development efforts in our Lawrence market.



**Megan Miller’s business acumen grounds the creative minds at Tallgrass Studios**

A Kansas native, Megan holds an MBA in Accounting from Pittsburg State University. Her expertise includes auditing, data analysis, and inventory management.

As Tallgrass Studios’ Fulfillment Director, Megan ensures that marketing collateral is printed, stored, and distributed with the utmost efficiency. She makes the process easy by managing clients’ custom online storefronts, order tracking, and managing their inventory levels.

Megan enjoys bringing her accounting and business background to balance the creative team at Tallgrass Studios.



**Katie Hinkle joins Foundations Commercial**

Foundations Commercial, a full-service commercial real estate brokerage, welcomed Katie Hinkle to their team as their Communications and Social Media Director. Katie holds a Master of Science in Accounting and Financial Analysis from Northeastern State University. She has an extensive leadership background in the retail sector and is eager to bring her business acumen to Ms. Flory’s team.

Foundations Commercial serves as a full-service brokerage offering Seller, Landlord, Buyer, and Tenant representation with clients throughout the state of Kansas. Kirsten Flory, President and Broker of Foundations Commercial, has led deals and worked with properties including office, retail, industrial, investment, and development land. “With our expanded market share and transaction volume, the time was right to expand our team,” explains Ms. Flory.



**United Way of Kaw Valley Announces New Hires for Three Positions**

**Kathy Smith is the new Vice President of Douglas County Initiatives.** A Topeka transplant, Smith now lives in Lawrence and is a third-generation Kansan. She has experience with nonprofit grantmaking, event planning, organizational convening, donor development and relationship building. Smith will oversee community investments in Douglas County, including grant-making, building relationships with agency partners, and strategic planning for the future of impact throughout the community. Her office is located in UWKV’s new Douglas County location, 1127 Iowa St. in Lawrence.



**TJ McDonald is the new Director of Workplace Campaigns.** TJ joins UWKV with years of experience in the sales and insurance industry. He has built great connections in the Topeka corporate world and enjoys helping businesses leverage their gifts to make the biggest impact in the community. Based in the Topeka office, TJ will work with businesses throughout Shawnee and Jackson County to execute their workplace campaigns and to develop year-round corporate partnerships with United Way of Kaw Valley. He will also work with UWKV’s Young Leaders Society donor affinity group, and with key campaign volunteers, including annual Campaign Ambassadors.



**Nic Simons is the new Director of Major Gifts & Legacy Giving.** Nic has spent his career working in education, youth sports, and grant development. Each of his roles has afforded him the opportunity to work with donors and individuals across all the counties served by United Way of Kaw Valley. Nic will work with donors who make gifts outside the workplace campaign, specifically leadership (\$1,000 or more per year) and Tocqueville-level donors (\$10,000 or more per year). This includes individuals making gifts of stock, IRA charitable rollovers, irrevocable trusts, and legacy gifts. He will also work with our Women United and Always United (retirees) donor affinity groups.

**Arabella Gipp Earns Second-Straight Lawrence Youth of the Year Honors**

Boys & Girls Club of Lawrence CEO, Monica Dittmer, explained the heartfelt reason why the Youth of the Year program is incredibly special after Arabella Gipp earned the 2023 Lawrence Youth of the Year honors. “Because it’s not a competition, and it’s not even just a group of kids – it’s a family,” Dittmer said. “That’s what we do. We bring these kids together, we put them in a circumstance and we provide the support they need to watch them grow into whoever they want to be. It’s a family atmosphere, it’s a safe place to try new things, it’s somewhere they can take a risk – they might fail, but they might also do something really amazing. That’s what makes this whole process so special.”

Presented by Mid America Bank, Youth of the Year celebrates the life-long relationships that kids develop with the Boys & Girls Club. Those students who earn a Youth of the Year nomination embody the values of leadership service, academic excellence and healthy lifestyles. They exemplify the powerful impact that the Boys & Girls Club has on kids in Lawrence.

BGCLK celebrated five candidates in total in its annual event. Chloe Clossen (Sophomore, FSHS), Ohene Danso (Sophomore, FSHS), Audrey Rice (Graduated Senior, FSHS), La’Ron Williams (Junior, FSHS) and Gipp were each nominated by their Club mentors to vie for the top honor a Club kid can receive. Gipp, a sophomore at Lawrence High School, was named the Lawrence Youth of the Year winner for the second year in a row.





Coach Combs trained me to rehabilitate an ACL and Meniscus tear. He made me faster, stronger, jump higher and simply play better in my sports after my work with him!

**DEVIN NEAL**  
Football & Baseball at KU

The strength and fitness I gained training with Coach Combs helped me get athletic scholarships in volleyball and powerlifting at the collegiate level.

**REAGHAN BIBLE**  
Volleyball & Weightlifting at William Jewell

Aaron Combs has trained everyone in my family, starting with my kids, and now his most difficult task - myself. I can't recommend him enough for you and your family.

**CHRIS PIPER**  
'88 Championship Team, Owner of Grandstand



**THE BEST IN PERSONAL TRAINING AND IN A SAFE ENVIRONMENT**

One on One / Couples / Small Group Training.  
By Appointment Only.  
Safe Protocols: Spacing, Clean, Hygienic.

**OFFICIALSPORTS**  
MOVEMENT WITH A PURPOSE

- Athletic Strength Development
- Agility and Speed Training
- Power Training
- Injury Prevention / Pre Habilitation

4910 Wakarusa Ct. suite A • Lawrence KS 66047 • (785) 766-0763

WHEN YOU DONATE TO JUST FOOD... YOU'RE FEEDING YOUR NEIGHBORS



[WWW.JUSTFOODKS.ORG/GIVE](http://WWW.JUSTFOODKS.ORG/GIVE)

## Make an Impact. Advertise in the Lawrence Business Magazine!

"The Lawrence Business Magazine is not only a quality publication, Steve and Ann truly support our business & endeavors. And with the Foundation Awards – they do a terrific job. The Awards make businesses realize the importance of their own growth in our community."

▲ Kathy Pine, Pine Landscape Center

"Ann, Steve, and the Lawrence Business Magazine team are fantastic to work with! They genuinely care about our business success and our needs! We value our relationship we have with them!"

▲ Pat McCandless, Stephens Real Estate

"At the Lawrence Business Magazine they advocate for their advertisers and everything local. Local businesses need to support each other, you can't do it alone, and the Lawrence Business Magazine is a true supporter of local businesses."

▲ Kevin & Shana Good, Good Energy Solutions

"We are treated more like a partner than an advertiser. They support their advertisers, and you know they care about you and in your business' success."

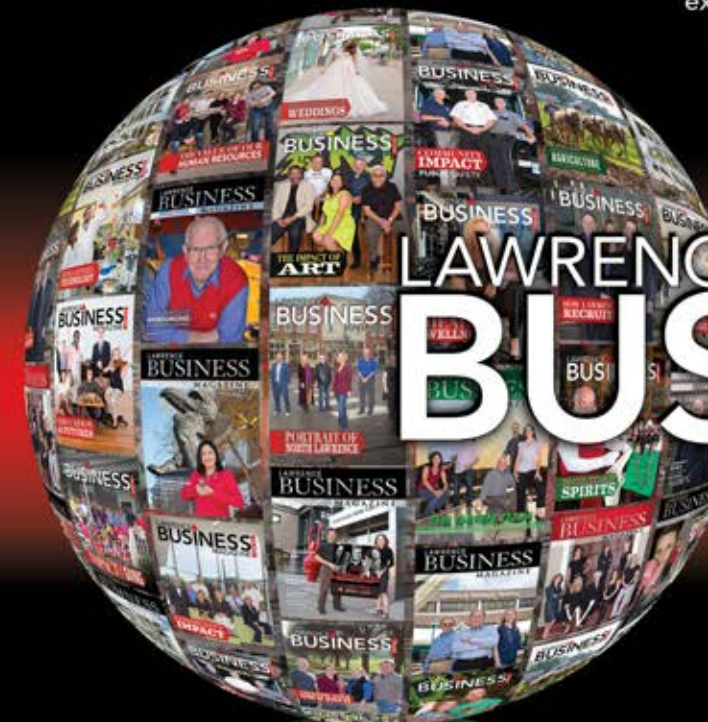
▲ Nancy Longhurst, The Oread

"It is a great place to showcase Emprise Bank and support local businesses. At the Lawrence Business Magazine, they go the extra mile."

▲ Cynthia Yulich, Emprise Bank

"Express Professionals started advertising in the Lawrence Business Magazine over three years ago. This was one of the best advertising moves we have made. It is continuous exposure to all our clients and potential clients we need to get in front of. The team at LBM is top notch to work with. Thanks LBM for being a great asset to the Lawrence community!"

▲ Kate Chinn, Express Employment Professionals



LAWRENCE **BUSINESS** MAGAZINE Since 2011

**Make a Positive Impact**

The only local magazine dedicated to telling the stories of people and businesses making a positive impact on Lawrence & Douglas County.

All of our advertisers have a stake in the local economy - we ask you to first consider them before looking to source your needs outside of the community. We believe in order to have a strong community you must be supported by businesses and people with a stake in that community.

[www.LawrenceBusinessMagazine.com/advertise](http://www.LawrenceBusinessMagazine.com/advertise)





### WHOSE DESK?

Be the first to correctly guess which local business figure works behind this desk. Winner receives a \$50 gift card to 23rd Street Brewery. [facebook.com/lawrencebusinessmagazine](https://www.facebook.com/lawrencebusinessmagazine)

## The Best Team in Local Radio



TALK/NEWS/SPORTS ON **KLWN**  
 COUNTRY HITS ON **THE BULL** & YOUR #1 HITS ON **KISS**  
**92.9 The Bull** 20 in a row Country Hits Then & Now  
**FM 101.7 KLWN AM 1320**  
**105.9 KISS FM** YOUR #1 Hit Music Station in NE Kansas!

**LOCAL Radio • LOCAL Targets • LOCAL Team**  
 Call 785-843-1320 to find out how our team can help YOUR local business.

# GRANDSTAND

CUSTOM PRINTED GLASSWARE AND APPAREL  
 — SINCE 1988 —

Grandstand has printed over 300 million pieces of glassware and apparel, helping thousands of brands reach their full potential. All while bringing together an uplifting work community.

Get to know us more on our website  
[eGRANDSTAND.COM](http://eGRANDSTAND.COM)







Adam M.  
Goodyear, MD



James C.  
Huston, MD



Douglass E.  
Stull, MD



Richard G.  
Wendt, MD

# Joint replacement specialists keep you moving.

Whatever your goals are for staying active, they certainly don't involve persistent joint pain – or a long drive to see a joint specialist. At LMH Health OrthoKansas, we'll relieve you of both. As the area's only orthopedic center offering a

comprehensive approach to joint health, four of our nine physicians have elite training and extensive experience in joint replacement surgery, delivering the latest techniques, technologies and expertise right to you.

Choose the orthopedic team that will keep you driving toward your goals, not toward out-of-town care: [785-843-9125](tel:785-843-9125) or [lmh.org/healthyjoints](http://lmh.org/healthyjoints)



A partner for lifelong health