

# LAWRENCE BUSINESS MAGAZINE

2022 Q4



# Women of Impact

## **Sarah Randolph celebrates her 10th year with Bridge Haven Memory Care!**

Krys O'Brien has been named the Director of Communications for The Chamber, Lawrence, As the Executive Director of Bridge Haven Memory Care, Sarah promotes well-being and comfort for her residents, their families, and all staff members. She has helped Bridge Haven open four memory and physical care homes on a beautiful campus in West Lawrence. Residents and their families enjoy a fish pond, six water features, abundant gardens, a wooded walking path, three shade gazebos and pavilions as well as a play area for children.

Sarah Randolph has more than twenty years in healthcare, is a native Lawrencian, and a graduate of the University of Kansas. Sarah says "Alongside my amazing staff members, I am always evolving and improving our care. Nursing home care does not have to look or feel like it has in the past. Care can be individualized in a beautiful smaller setting delivered by certified professionals."



## **Allegra Baxter brings digital expertise to Tallgrass Studios**

Allegra is a Kansas native and holds a BA in Psychology from KU, as well as an AAS in Graphic Design from JCCC. Her expertise includes branding, website design, motion design, social media, and content marketing.

As Tallgrass Studios' digital media designer, Allegra brings brands straight to your device of choice and ensures it's a cohesive and compelling experience. Her background in Psychology informs much of her work, as she always seeks to understand more about a brand's audience and their experiences and desires.

She believes in the power of design to change how we interact with the world and the decisions we make.



## **The EDC and Lawrence Chamber Welcome Rob Richardson**

The EDC and the Chamber are excited to announce and welcome Rob Richardson as the Panasonic Opportunities Manager. "We believe it is essential to have a point person specifically tasked with furthering our interests in the many facets of the Panasonic development process." Bonnie Lowe, Chamber and EDC President and CEO said.

This summer Panasonic announced it will build a \$4 billion facility in De Soto just 7 miles to the east of Douglas County. This development brings significant new economic opportunities and is fast approaching for Douglas County. This project is the biggest private investment in state history, bringing 4,000 Panasonic jobs and a projected 4,500 supplier jobs to the region. Another approximately 15,000 construction jobs in the next 2 years will construct the plant. Panasonic will be producing new batteries or electric vehicles.



## **Chamber Welcomes Joshua Falleaf, New Director of EDC**

The Chamber is excited to announce that Joshua Falleaf has been named the Director of Economic Development for The Chamber, Lawrence, Kansas. Falleaf is responsible for promoting job growth and investment throughout the City of Lawrence and Douglas County, KS. Joshua will also develop and maintain strategic relationships and continue to have open lines of communication with local stakeholders and economic development partners.

Prior to joining the Chamber staff, Falleaf was a consultant with Coneflower Consulting in developing strategic planning processes for clients, particularly regarding diversity, equity, and inclusion initiatives. He also served as the Dean of the College of Humanities and Arts, as well as an English Instructor at Haskell Indian Nations University from 2012 - 2022.





## Willis named new Branch Manager at Truity Credit Union

Truity Credit Union is pleased to welcome Johnathan Willis as the newest Lawrence Branch Manager. He will serve at the 23rd Street branch location.

“We are thrilled to promote Johnathan to a branch manager position,” Vice President, Lawrence Market Manager Kaylee Sell said. “He has an enthusiastic attitude and eagerness to help others which will be great assets to the credit union, our members and the community.”

Previously at Truity, he worked as a Member Consultant and a Branch Coordinator. He is passionate about the community and is eager to partner with local organizations and build relationships with members. He lives in Lawrence with his wife, Madi, and dog, Cooper.



## Griffin wins NextGen Under 30 Kansas

Truity Credit Union is excited to announce Branch Manager Jordan Griffin has been named a winner of the NextGen Under 30 Kansas award. This program seeks to recognize individuals who demonstrate talent, drive and service to their communities.

“We are incredibly proud of Jordan and the exemplary work she does every single day with our employees and members. This award is well deserved,” Vice President, Lawrence Market Manager Kaylee Sell said. “We look forward to being on the front line of her continued success as she progresses in her career at Truity Credit Union.”

Griffin has been in the financial industry since 2016 and has filled various roles at Truity. She currently serves as the Social Chair for Lawrence Young Professionals and is involved with the Lawrence Women's Network. She is also an active member of the Chamber of Commerce and enjoys volunteering with Douglas County United Way and Junior Achievement.

## Good Energy Solutions Launches New Solar Service and Repair Division

Good Energy Solutions, one of the leading solar design and installation companies in Kansas and Missouri, has opened a new division dedicated solely to the service and repair of solar panel systems.

This new division will help owners of existing residential and commercial solar panel installations keep their systems operating at peak efficiency, diagnose problems, and make repairs. Jeff Dunn, Director of Solar Service for Good Energy Solutions says, “We want to keep your solar panel system working at its absolute best. Our team of solar technicians can service, fix or upgrade any system, even if it wasn't installed by us.”

The new solar service and repair division will also help clients remove/reinstall solar panels, update monitoring software, and install critter guard barriers around panels. The Good Energy Solutions solar team is entirely made up of full-time employees with many being NABCEP® certified, indicating they are elites in the solar industry.



## Boys & Girls Club Leaders Recognized at Kiwanis Honors Dinner

The Kiwanis Club of Lawrence hosted its sixth Honors Dinner to benefit the Boys & Girls Club of Lawrence, bringing recognition and celebration to two long-standing community organizations.

Left to right: Matt Llewellyn (Board Member), Gary Rexroad (Kiwanis Substantial Citizen), Mindy Collmeyer (BGCLK Advocate and Volunteer), Lindsay (BGCLK Director of Program Operations), Kathryn Watson-Jackson (BGCLK Youth Support Aide), Brandon McAnderson (Master of Ceremonies).



## WHOSE DESK?

Be the first to correctly guess which local business figure works behind this desk. Winner receives a \$50 gift card to 23rd Street Brewery. [facebook.com/lawrencebusinessmagazine](https://www.facebook.com/lawrencebusinessmagazine)

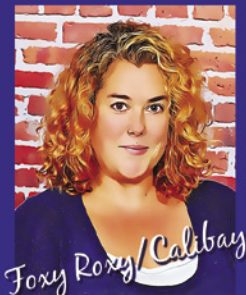
# The Best Team in Local Radio



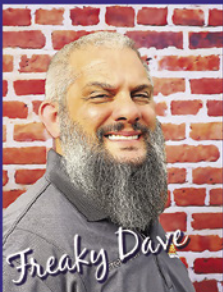
Cruise



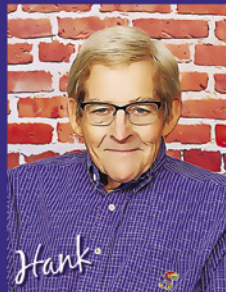
Derek



Foxy Roxy/Calibay



Freaky Dave



Hank



Joel



Jonathan



Newman

TALK/NEWS/SPORTS ON **KLWN**  
COUNTRY HITS ON **THE BULL**  
& YOUR #1 HITS ON **KISS**

**92.9 The Bull**  
20 in a row Country Hits  
Then & Now

**FM 101.7**  
**KLWN**  
**AM 1320**

**105.9**  
**KISS FM**  
YOUR #1 Hit Music  
Station in NE Kansas!

LOCAL Radio • LOCAL Targets • LOCAL Team

Call 785-843-1320 to find out how our team can help YOUR local business.

# Make an Impact. Advertise in the Lawrence Business Magazine!

“The Lawrence Business Magazine is not only a quality publication, Steve and Ann truly support our business & endeavors. And with the Foundation Awards – they do a terrific job. The Awards make businesses realize the importance of their own growth in our community.”

▲ Kathy Pine, Pine Landscape Center

“Ann, Steve, and the Lawrence Business Magazine team are fantastic to work with! They genuinely care about our business success and our needs! We value our relationship we have with them!”

▲ Pat McCandless,  
Stephens Real Estate

“At the Lawrence Business Magazine they advocate for their advertisers and everything local. Local businesses need to support each other, you can’t do it alone, and the Lawrence Business Magazine is a true supporter of local businesses.”

▲ Kevin & Shana Good,  
Good Energy Solutions

“We are treated more like a partner than an advertiser. They support their advertisers, and you know they care about you and in your business’ success.”

▲ Nancy Longhurst,  
The Oread

“It is a great place to showcase Emprise Bank and support local businesses. At the Lawrence Business Magazine, they go the extra mile.”

▲ Cynthia Yulich,  
Emprise Bank

“Express Professionals started advertising in the Lawrence Business Magazine over three years ago. This was one of the best advertising moves we have made. It is continuous exposure to all our clients and potential clients we need to get in front of. The team at LBM is top notch to work with. Thanks LBM for being a great asset to the Lawrence community!”

▲ Kate Chinn,  
Express Employment Professionals



# LAWRENCE BUSINESS MAGAZINE

Since 2011

## Make a Positive Impact

The only local magazine dedicated to telling the stories of people and businesses making a positive impact on Lawrence & Douglas County.

All of our advertisers have a stake in the local economy - we ask you to first consider them before looking to source your needs outside of the community. We believe in order to have a strong community you must be supported by businesses and people with a stake in that community.

[www.LawrenceBusinessMagazine.com/advertise](http://www.LawrenceBusinessMagazine.com/advertise)



# Women's Health Reimagined



**LMH Health is changing the patient experience with convenience, innovation and technology.**

The LMH Health Women's Center located at the LMH Health West Campus provides a streamlined service of multidisciplinary care in one place.

This means you can set up convenient same-day appointments to check-off multiple yearly screenings in one trip.

**Call 785-505-3800 to schedule an appointment or learn more at [lmh.org/womens-health](https://lmh.org/womens-health).**



A partner for lifelong health